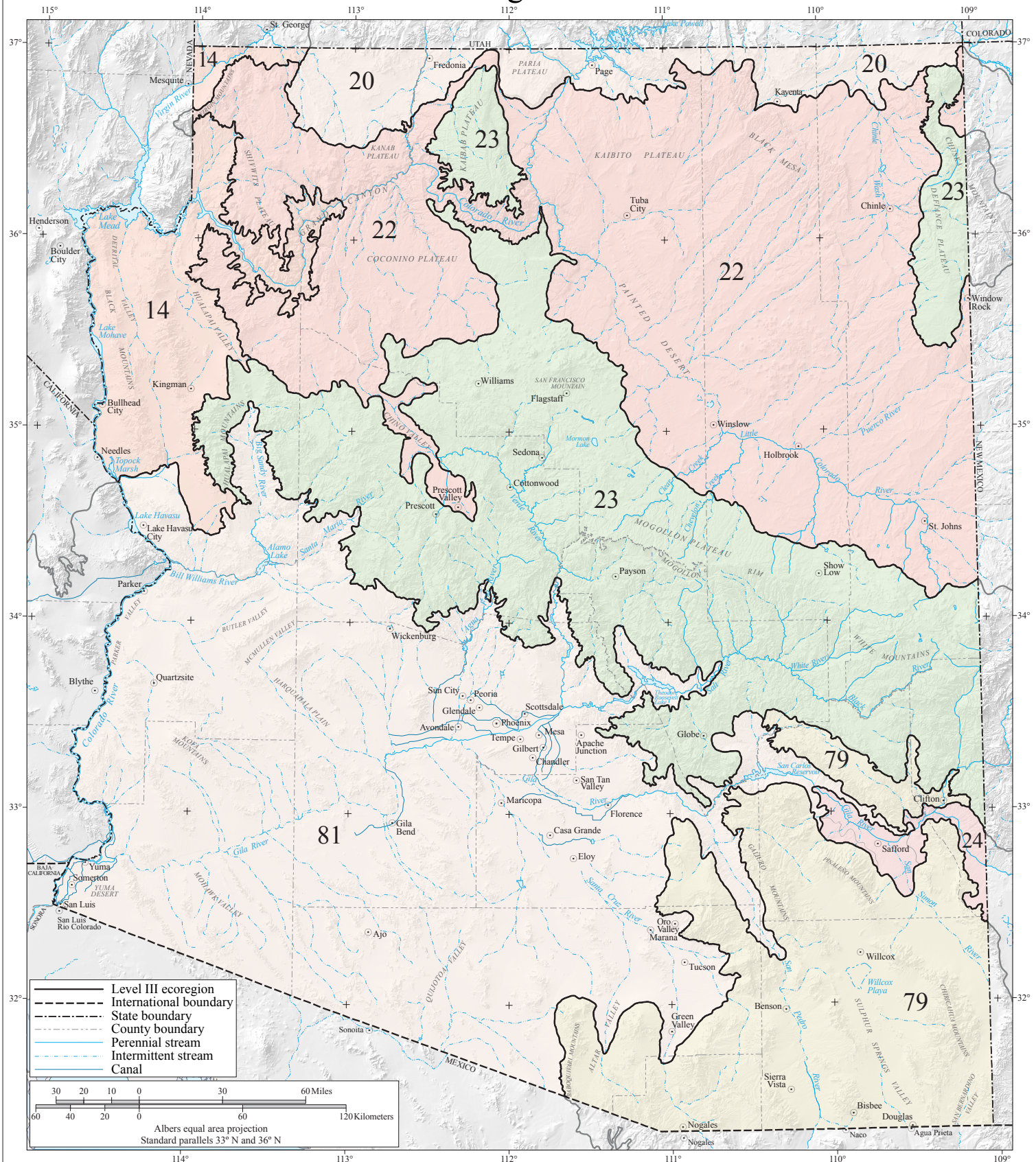


# Level III Ecoregions of Arizona



- 14 Mojave Basin and Range
- 20 Colorado Plateaus
- 22 Arizona/New Mexico Plateau
- 23 Arizona/New Mexico Mountains
- 24 Chihuahuan Deserts
- 79 Madrean Archipelago
- 81 Sonoran Basin and Range

Ecoregions denote areas of general similarity in ecosystems and in the type, quality, and quantity of environmental resources. They are designed to serve as a spatial framework for the research, assessment, management, and monitoring of ecosystems and ecosystem components. These general purpose regions are critical for structuring and implementing ecosystem management strategies across federal agencies, state agencies, and nongovernment organizations that are responsible for different types of resources within the same geographical areas. Compilation of this map is based on the premise that ecological regions can be identified through the analysis of patterns of biotic and abiotic phenomena, and both terrestrial and aquatic characteristics. These include geology, physiography, vegetation, climate, soils, land use, wildlife, and hydrology. The Ecoregions of Arizona map was compiled at a scale of 1:250,000. The map was part of a collaborative project between USGS, US EPA National Health and Environmental Effects Research Laboratory (Corvallis, Oregon), US EPA Region 9, USDA-NRCS, USDA-FS, Arizona state environment and natural resource agencies, as well as with other collaborators and contributors.

PRINCIPAL AUTHORS: Glenn E. Griffith (USGS), James M. Omerik (USGS), Colleen Burch Johnson (Raytheon Corporation), and Dale S. Turner (TNC).

This map is derived from a poster publication of Level III and IV ecoregions: Griffith, G.E., Omerik, J.M., Johnson, C.B., and Turner, D.S., 2014, Ecoregions of Arizona (poster): U.S. Geological Survey Open-File Report 2014-1141, with map, scale 1:1,325,000, <http://dx.doi.org/10.3133/ofr20141141>.

Additional ecoregion information is available at: <http://www.epa.gov/wed/pages/ecoregions.htm>

