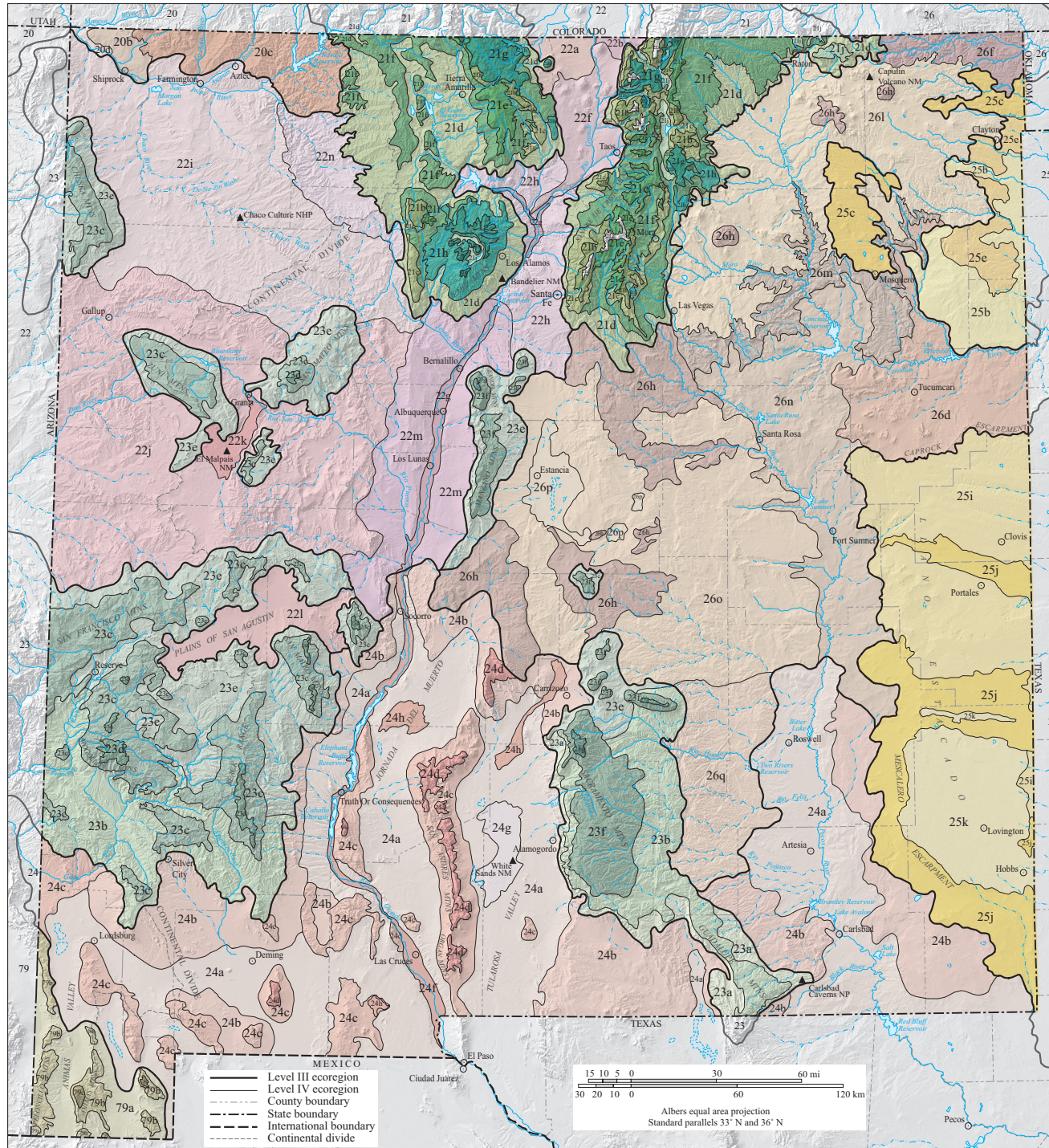
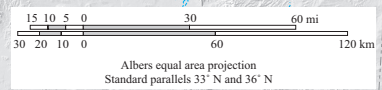


Ecoregions of New Mexico



- 20 Colorado Plateaus**
 - 20b Shale Deserts and Sedimentary Basins
 - 20c Semi-arid Benchlands and Canyonlands
 - 20d Arid Canyonlands
- 21 Southern Rockies**
 - 21a Alpine Zone
 - 21b Crystalline Subalpine Forests
 - 21c Crystalline Mid-Elevation Forests
 - 21d Foothill Woodlands and Shrublands
 - 21e Sedimentary Subalpine Forests
 - 21f Sedimentary Mid-Elevation Forests
 - 21g Volcanic Subalpine Forests
 - 21h Volcanic Mid-Elevation Forests
 - 21j Grassland Parks
- 22 Arizona/New Mexico Plateau**
 - 22a San Luis Shrublands and Hills
 - 22b San Luis Alluvial Flats and Wetlands
 - 22f Taos Plateau
 - 22g Rio Grande Floodplain
 - 22h North Central New Mexico Valleys and Mesas
 - 22i San Juan/Chaco Tablelands and Mesas
 - 22j Semi-arid Tablelands
 - 22k Lava Malpais
 - 22l Plains of San Agustin
 - 22m Albuquerque Basin
 - 22n Near-Rockies Valleys and Mesas
- 23 Arizona/New Mexico Mountains**
 - 23a Chihuahuan Desert Slopes
 - 23b Madrean Lower Montane Woodlands
 - 23c Montane Conifer Forests
 - 23d Arizona/New Mexico Subalpine Forests
 - 23e Conifer Woodlands and Savannas
 - 23f Rocky Mountain Conifer Forests
 - 23g Rocky Mountain Subalpine Forests
- 24 Chihuahuan Deserts**
 - 24a Chihuahuan Basins and Playas
 - 24b Chihuahuan Desert Grasslands
 - 24c Low Mountains and Bajadas
 - 24d Chihuahuan Montane Woodlands
 - 24f Rio Grande Floodplain
 - 24g Gypsiferous Dunes
 - 24h Lava Malpais
- 25 High Plains**
 - 25b Rolling Sand Plains
 - 25c Moderate Relief Plains
 - 25e Canadian/Cimarron High Plains
 - 25i Llano Estacado
 - 25j Shinnery Sands
 - 25k Arid Llano Estacado
- 26 Southwestern Tablelands**
 - 26d Semi-arid Canadian Breaks
 - 26f Mesa de Maya/Black Mesa
 - 26h Pinyon-Juniper Woodlands and Savannas
 - 26i Upper Canadian Plateau
 - 26m Canadian Canyons
 - 26n Conchas/Pecos Plains
 - 26o Central New Mexico Plains
 - 26p Pluvial Lake Basins
 - 26q Southern New Mexico Dissected Plains
- 79 Madrean Archipelago**
 - 79a Apachian Valleys and Low Hills
 - 79b Lower Madrean Woodlands
 - 79c Madrean Pine-Oak and Mixed Conifer Forests

— Level III ecoregion
 - - - Level IV ecoregion
 - - - County boundary
 - - - State boundary
 - - - International boundary
 - - - Continental divide



CITING THIS MAP: Griffith, G.E., Omernik, J.M., McGraw, M.M., Jacobi, G.Z., Canavan, C.M., Schrader, T.S., Mercer, D., Hill, R., and Moran, B.C., 2006, Ecoregions of New Mexico (color poster with map, descriptive text, summary tables, and photographs): Reston, Virginia, U.S. Geological Survey (map scale 1:1,400,000).

Ecoregion maps, publications, GIS files, and contact information are available at www.epa.gov/wed/pages/ecoregions.htm.